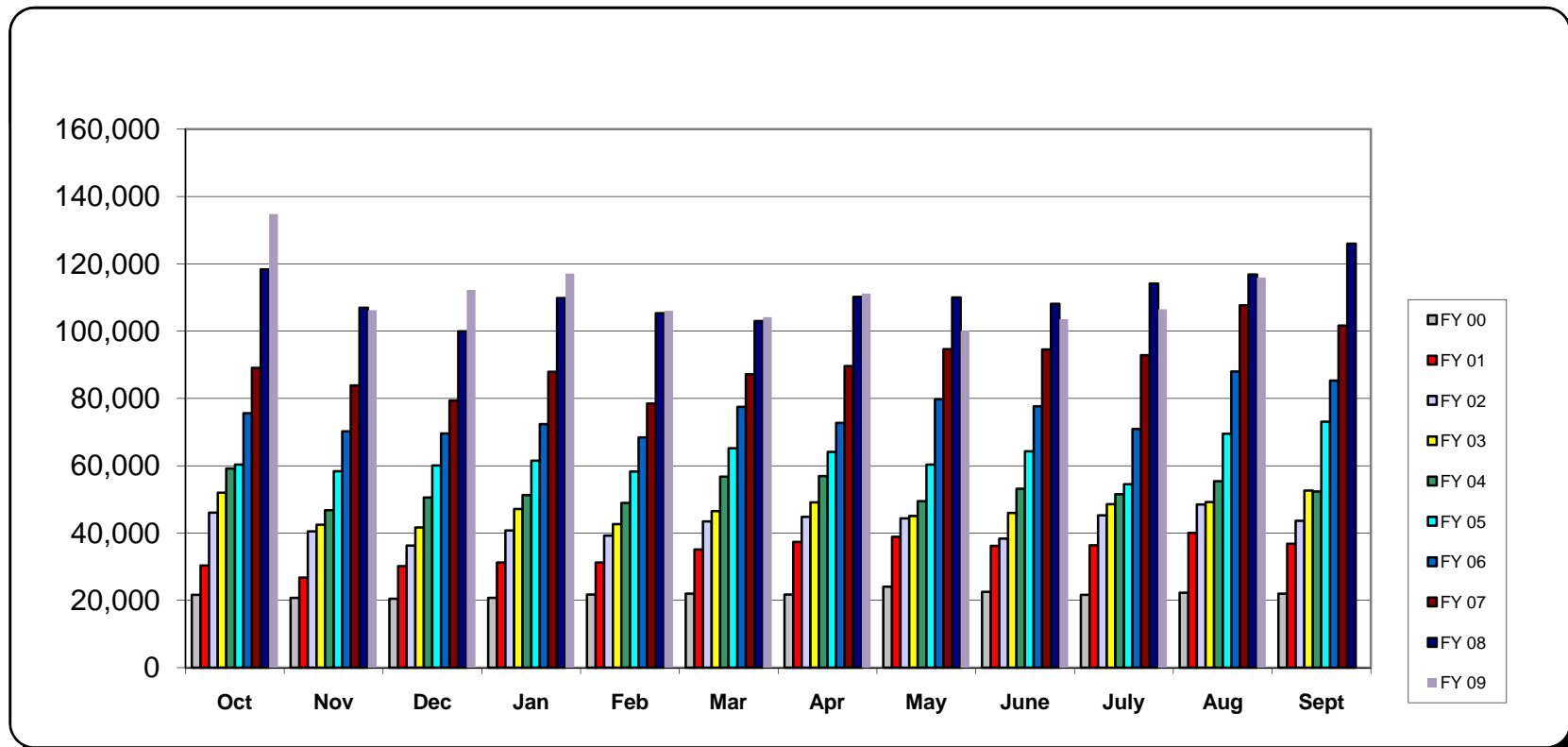


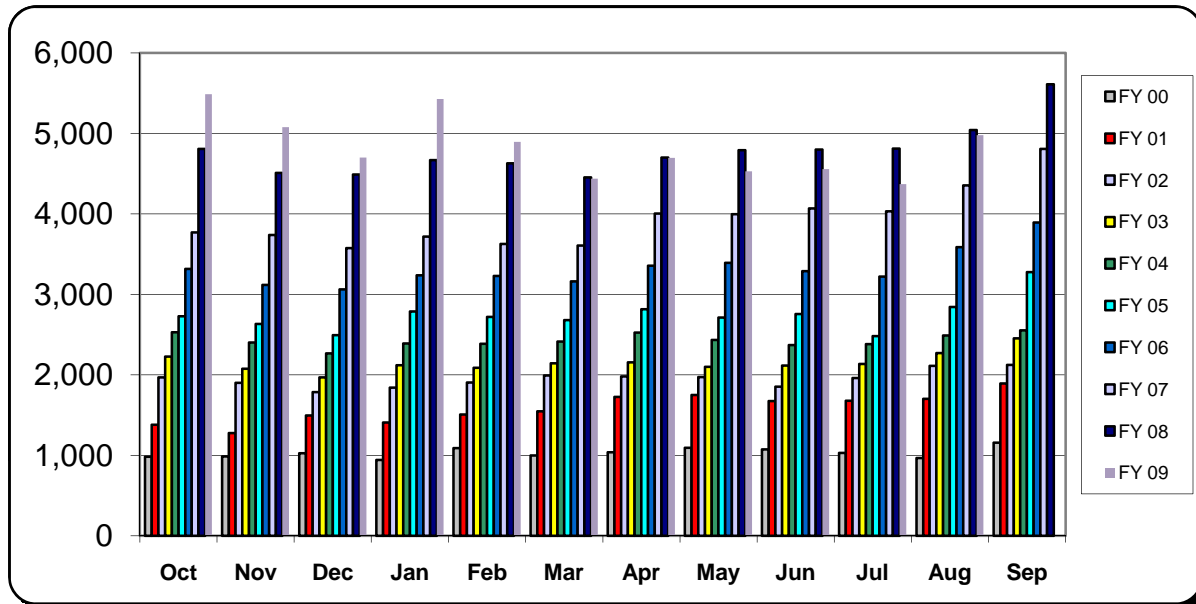
Montgomery Area Transit System Fiscal Year Passenger Trips Comparison

	<i>Oct</i>	<i>Nov</i>	<i>Dec</i>	<i>Jan</i>	<i>Feb</i>	<i>Mar</i>	<i>Apr</i>	<i>May</i>	<i>June</i>	<i>July</i>	<i>Aug</i>	<i>Sept</i>	Totals
FY 00	21,627	20,700	20,487	20,763	21,768	21,979	21,765	24,022	22,575	21,609	22,254	21,990	261,539
FY 01	30,380	26,775	30,158	31,259	31,247	35,118	37,378	38,919	36,168	36,348	40,036	36,775	410,561
FY 02	46,092	40,523	36,285	40,808	39,206	43,416	44,775	44,346	38,368	45,268	48,453	43,622	511,162
FY 03	51,987	42,442	41,676	47,109	42,654	46,483	49,119	45,080	45,992	48,571	49,233	52,577	562,923
FY 04	59,182	46,816	50,538	51,293	48,896	56,766	56,884	49,438	53,150	51,522	55,421	52,371	632,277
FY 05	60,305	58,397	60,051	61,488	58,314	65,154	64,092	60,364	64,295	54,461	69,507	73,126	749,554
FY 06	75,606	70,229	69,595	72,380	68,431	77,447	72,730	79,700	77,654	70,960	88,004	85,263	907,999
FY 07	89,037	83,852	79,393	87,928	78,491	87,203	89,620	94,611	94,501	92,839	107,642	101,645	1,086,762
FY 08	118,317	106,901	99,919	109,816	105,360	102,956	110,167	109,974	108,142	114,160	116,777	125,970	1,328,459
FY 09	134,731	106,192	112,195	117,046	106,007	104,127	111,185	100,137	103,482	106,530	115,906		1,217,538



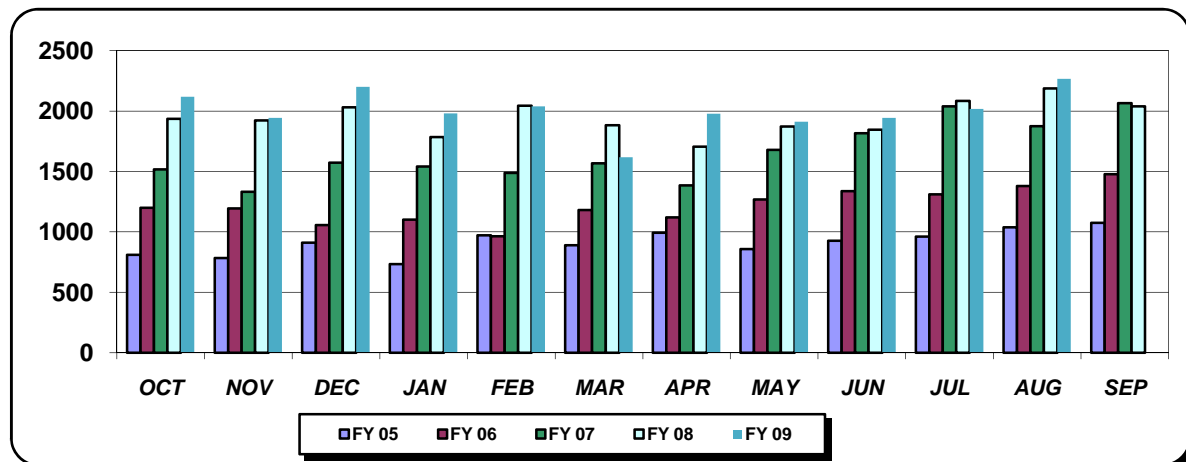
Montgomery Area Transit System Average Weekday Passenger Trips

	Oct	Nov	Dec	Jan	Feb	Mar	Apr	May	Jun	Jul	Aug	Sep
FY 00	983	986	1,024	944	1,088	999	1,036	1,092	1,075	1,029	968	1,157
FY 01	1,381	1,275	1,497	1,409	1,506	1,548	1,724	1,748	1,675	1,677	1,702	1,893
FY 02	1,967	1,902	1,787	1,839	1,903	1,992	1,982	1,974	1,851	1,960	2,113	2,122
FY 03	2,225	2,077	1,967	2,119	2,087	2,144	2,154	2,101	2,116	2,135	2,271	2,455
FY 04	2,529	2,402	2,268	2,390	2,386	2,414	2,526	2,432	2,369	2,382	2,488	2,554
FY 05	2,729	2,632	2,492	2,788	2,721	2,678	2,816	2,711	2,754	2,483	2,841	3,277
FY 06	3,315	3,117	3,063	3,237	3,229	3,162	3,357	3,392	3,287	3,220	3,586	3,893
FY 07	3,771	3,739	3,576	3,716	3,627	3,607	4,004	3,995	4,067	4,033	4,354	4,806
FY 08	4,808	4,510	4,488	4,667	4,628	4,454	4,698	4,791	4,798	4,810	5,040	5,610
FY 09	5,489	5,078	4,700	5,427	4,893	4,439	4,694	4,529	4,558	4,368	4,979	



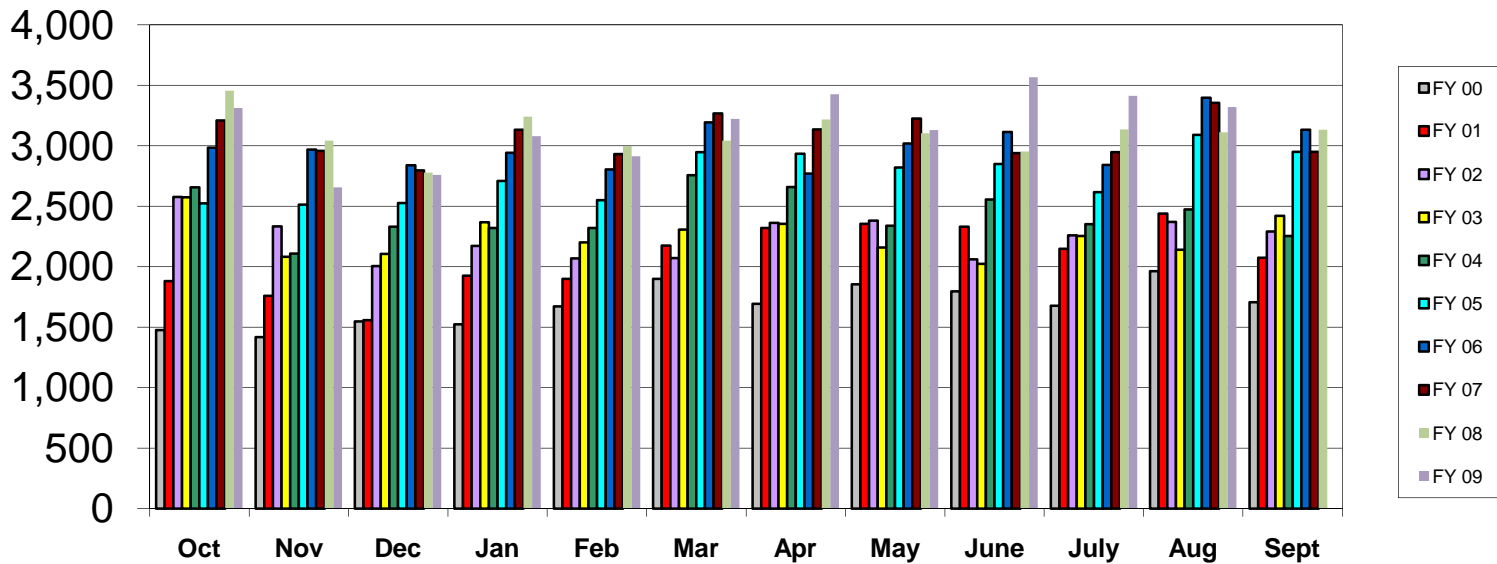
Saturdays

	OCT	NOV	DEC	JAN	FEB	MAR	APR	MAY	JUN	JUL	AUG	SEP
FY 05	810	783	912	733	973	891	992	858	928	962	1039	1075
FY 06	1199	1194	1056	1103	964	1180	1120	1269	1337	1311	1379	1479
FY 07	1517	1333	1573	1541	1489	1569	1384	1678	1817	2039	1875	2066
FY 08	1936	1922	2032	1784	2044	1884	1705	1873	1846	2085	2188	2040
FY 09	2118	1943	2201	1981	2039	1619	1977	1911	1943	2018	2268	



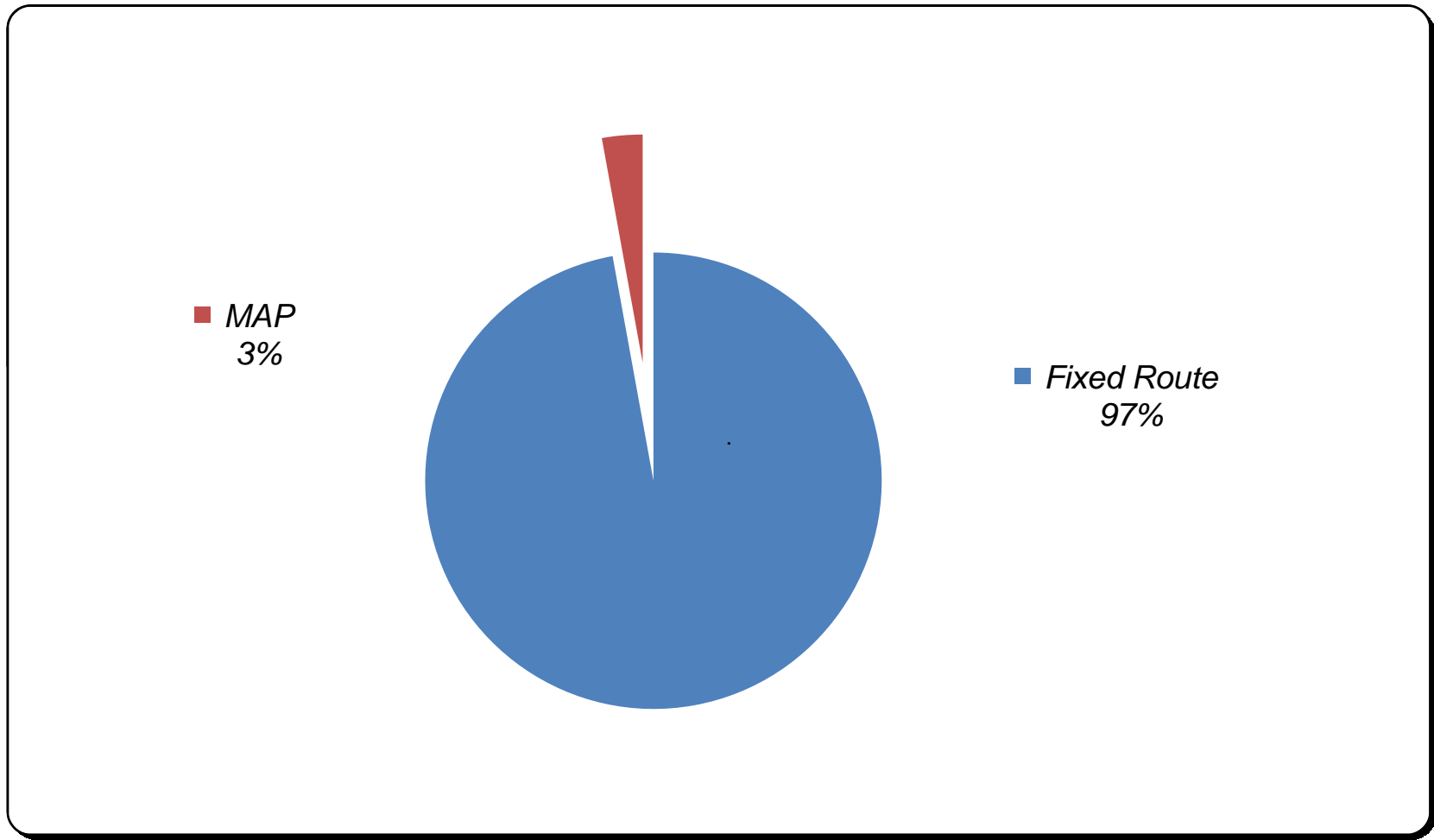
Montgomery Area Transit System MAP Passenger Trips

	<i>Oct</i>	<i>Nov</i>	<i>Dec</i>	<i>Jan</i>	<i>Feb</i>	<i>Mar</i>	<i>Apr</i>	<i>May</i>	<i>June</i>	<i>July</i>	<i>Aug</i>	<i>Sept</i>	Totals
FY 00	1,476	1,417	1,547	1,523	1,673	1,899	1,692	1,855	1,797	1,677	1,964	1,706	20,226
FY 01	1,882	1,758	1,558	1,925	1,899	2,175	2,319	2,354	2,332	2,148	2,439	2,075	24,864
FY 02	2,578	2,334	2,006	2,173	2,070	2,071	2,363	2,380	2,060	2,258	2,370	2,292	26,955
FY 03	2,574	2,081	2,106	2,369	2,200	2,307	2,355	2,160	2,023	2,253	2,141	2,420	26,989
FY 04	2,657	2,108	2,330	2,320	2,320	2,756	2,658	2,338	2,555	2,352	2,474	2,255	29,123
FY 05	2,524	2,512	2,527	2,709	2,549	2,947	2,933	2,821	2,850	2,616	3,091	2,949	33,028
FY 06	2,985	2,969	2,838	2,942	2,803	3,193	2,771	3,019	3,113	2,842	3,398	3,133	36,006
FY 07	3,209	2,958	2,795	3,133	2,932	3,266	3,136	3,224	2,939	2,948	3,354	2,949	36,843
FY 08	3,455	3,043	2,777	3,240	2,997	3,043	3,217	3,103	2,952	3,134	3,111	3,133	37,205
FY 09	3,313	2,657	2,760	3,080	2,914	3,221	3,425	3,130	3,566	3,413	3,321		34,800



Montgomery Area Transit System FY 09 Passenger Trips

	<i>Oct</i>	<i>Nov</i>	<i>Dec</i>	<i>Jan</i>	<i>Feb</i>	<i>Mar</i>	<i>Apr</i>	<i>May</i>	<i>June</i>	<i>July</i>	<i>Aug</i>	<i>Sept</i>	Totals
FIXED	131,418	103,535	109,435	113,966	103,093	100,906	107,760	97,007	99,916	103,117	112,585		1,182,738
MAP	3,313	2,657	2,760	3,080	2,914	3,221	3,425	3,130	3,566	3,413	3,321		34,800
TOTAL	134,731	106,192	112,195	117,046	106,007	104,127	111,185	100,137	103,482	106,530	115,906	0	1,217,538



Montgomery Area Transit System Lightning Route



	FY 05	FY 06	FY 07	FY 08	FY 09
October	3,009	3,393	2,302	2,573	2,019
November	2,414	2,193	2,101	1,993	1,705
December	2,113	1,692	1,821	1,363	1,590
January	1,474	1,452	1,481	1,172	1,308
February	1,699	1,399	1,872	2,001	1,756
March	3,195	2,462	3,512	3,013	2,512
April	3,787	2,385	3,313	2,859	2,881
May	2,680	2,180	2,501	3,051	2,099
June	3,104	3,549	3,464	3,275	3,060
July	2,898	4,431	4,858	4,408	3,790
August	3,141	2,872	2,707	2,874	2,540
September	2,470	2,083	3,139	2,591	0
TOTALS	31,984	30,091	33,071	31,173	25,260

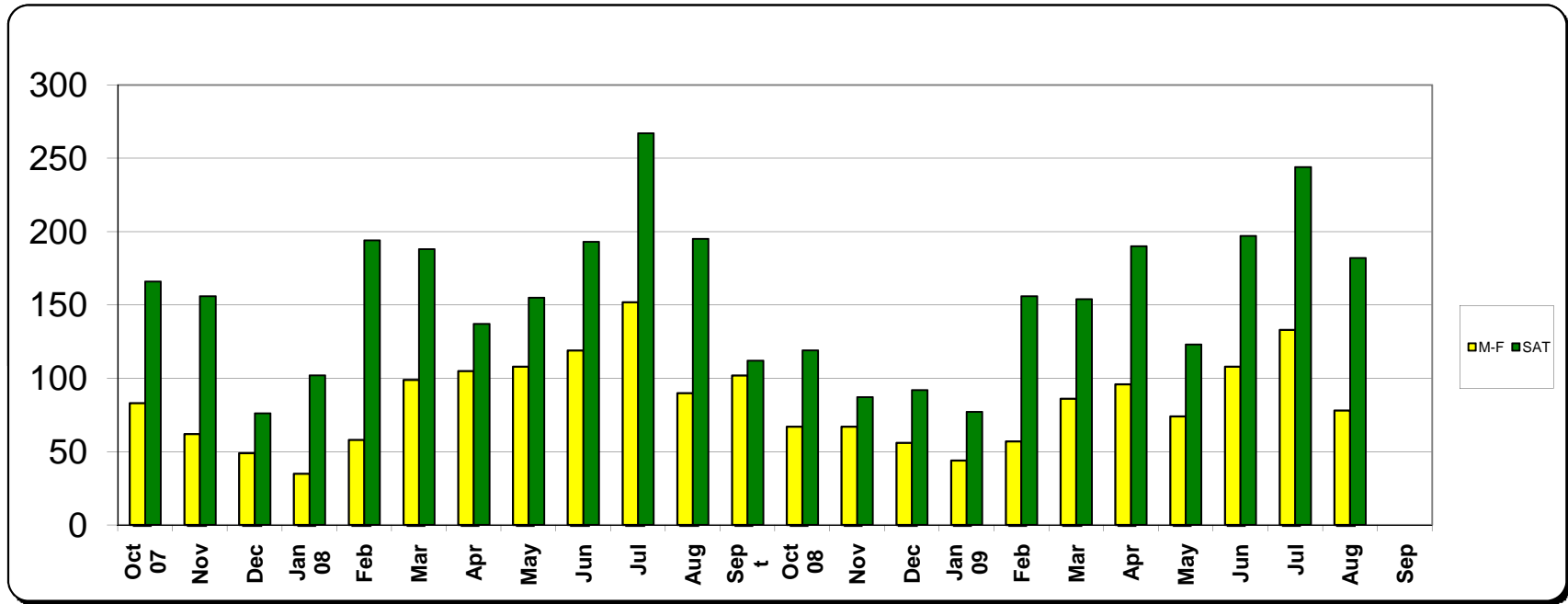
* *Lightning Route Trolley began service December, 2000*



Montgomery Area Transit System

Average Weekday and Saturday Lightning Route Passenger Trips

	Oct 07	Nov	Dec	Jan 08	Feb	Mar	Apr	May	Jun	Jul	Aug	Sept	Oct 08	Nov	Dec	Jan 09	Feb	Mar	Apr	May	Jun	Jul	Aug	Sep
M-F	83	62	49	35	58	99	105	108	119	152	90	102	67	67	56	44	57	86	96	74	108	133	78	
SAT	166	156	76	102	194	188	137	155	193	267	195	112	119	87	92	77	156	154	190	123	197	244	182	



Downtown **LUNCH TROLLEY** *Express*

	FY 07	FY 08	FY 09
October	0	795	290
November	0	450	295
December	0	786	395
January	0	298	355
February	0	417	221
March	0	698	451
April	305	562	397
May	1,592	632	213
June	1,699	815	344
July	1,222	583	316
August	1,044	429	366
September	933	450	0
TOTALS	6,795	6,915	3,643

The Lunch Trolley Express will circulate through Downtown Montgomery Monday through Friday between 11:00am & 2:00pm every 10-15 minutes and the ride will be FREE.

Combined with the existing Lightning Route, riders will have express access to virtually every restaurant in the Downtown area for lunch.

** Lunch Trolley Express began service April, 24, 2007*

